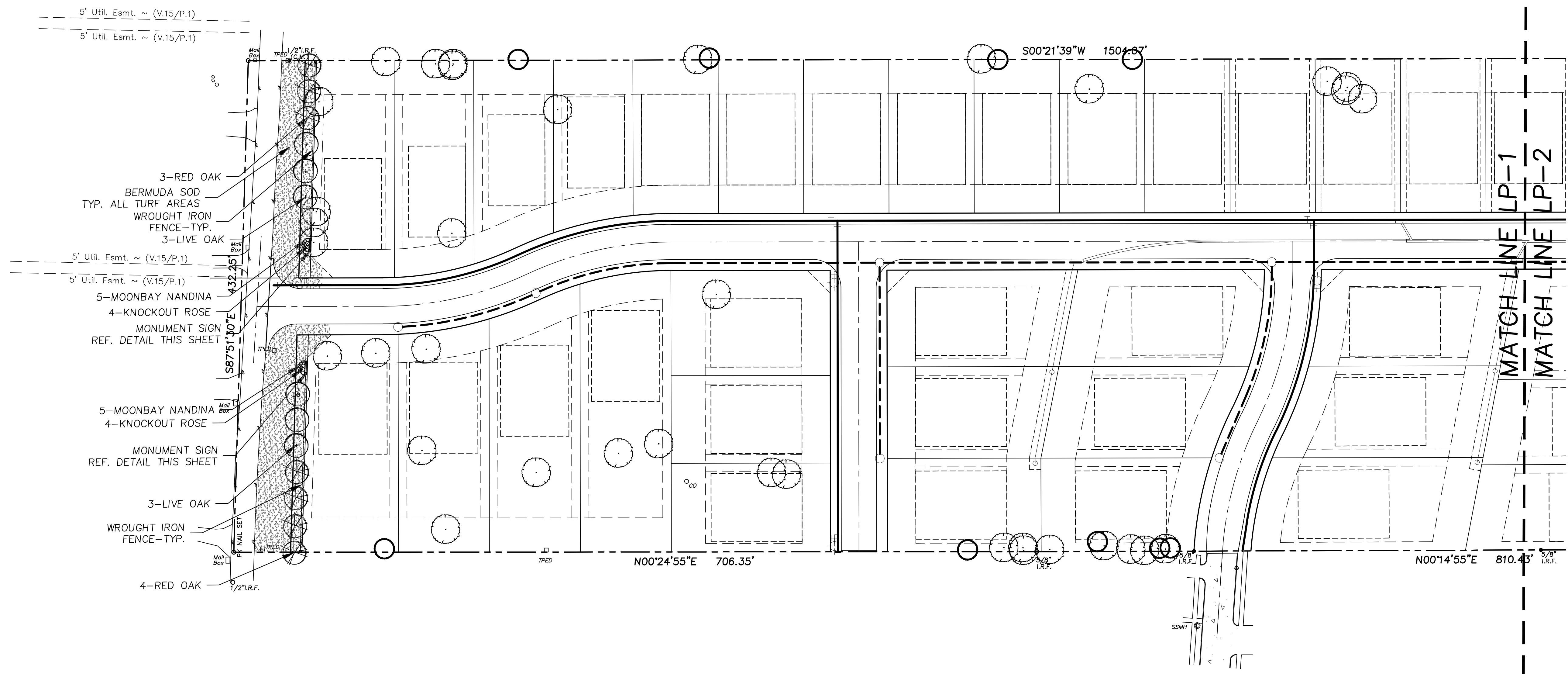


App.	
No.1 B-18-14	Per City Comments

Ridinger Associates, Inc.
 Civil Engineers - Planners
 Firm No. 1988, Lane, Suite 101, Lewisville, Texas 75067
 Tel. No. (972) 353-8000
 Fax No. (972) 353-8011



PROTECTED TREE LEGEND

DENOTES PROTECTED TREE TO BE PRESERVED ON SITE. REF. TP-1 AND TP-2

DENOTES NON-PROTECTED TREE TO BE PRESERVED. REF. TP-1 AND TP-2

PLANT LIST

12- LIVE OAK / QUERCUS VIRGINIANA / 3" CAL. / 5' SP. / 8' HT. / B & B
 12- RED OAK / QUERCUS SHUMARDII / 3" CAL. / 5' SP. / 8' HT. / B & B
 6- BALD CYPRESS / TAXODIUM DISTICHUM / 3" CAL. / 5' SP. / B & B
 3- CEDAR ELM / ULMUS CRASSIFOLIA / 3" CAL. / 5' SP. / 8' HT. / B & B
 8- KNOCK OUT ROSE / ROSA SPP. / 5 GAL. / 36" O.C.
 10- NANDINA / NANDINA DOMESTICA 'MOONBAY' / 3 GAL. / 30" O.C.
 BERMUDAGRASS / CYNODON DACTYLON / SOLID SOD

ST. CLAIR DESIGN GROUP, INC.
 Landscape Architecture
 P. O. Box 1258
 Dallas, Texas 75225
 T. 214-904-3641

DESIGN BY: JBS
 DRAWN BY: JBS
 CHECKED BY: SCDC
 DATE: MARCH 10, 2014

LANDSCAPE PLAN
PARKSIDE FARMS
 14.986 Acres out of the
 M.E.P. & P.R.R. Co. Survey, Abst. No. 950 and
 J.M Walton Survey, Abst. No. 1390
 City of Corinth,
 Denton County, Texas

PARKSIDE FARMS
 CORINTH, TEXAS

LANDSCAPE PLAN

Scale: 1" = 50'-0"
 Designed by: JBS
 Drawn by: JBS
 Checked by: SCDC
 Date: MARCH 10, 2014
 Project No. 035-012

SHEET
LP-1
 OF 2